

Prix 2.50

PARIS

EXPOSITION

1900

Brak



427696 BG



293314



La Porte Monumentale.

908/44: 77.03



Le Pont Alexandre III.

13391

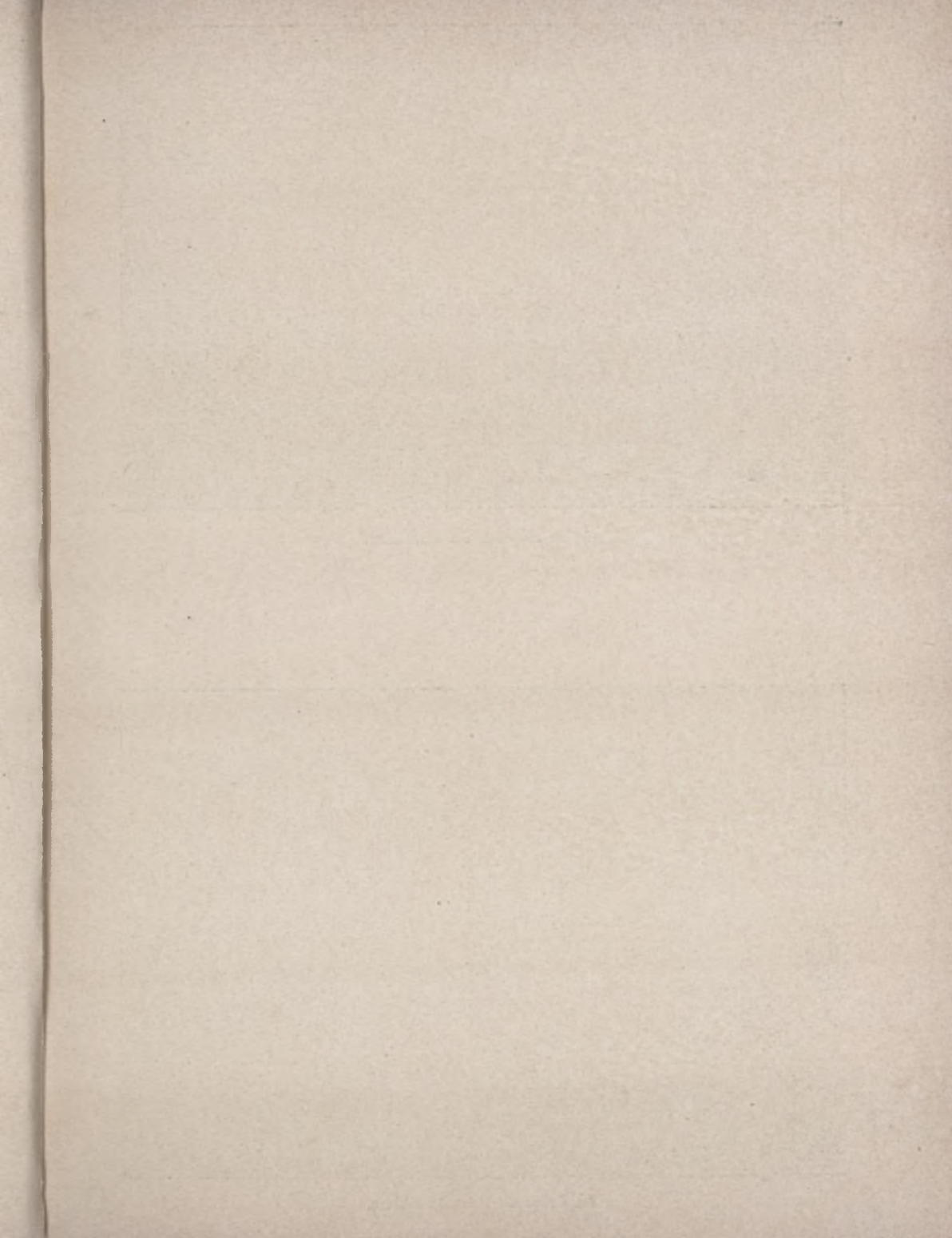


Le Grand Palais des Champs-Élysées.



Le Petit Palais des Champs-Élysées.







La Seine au Pont des Invalides.



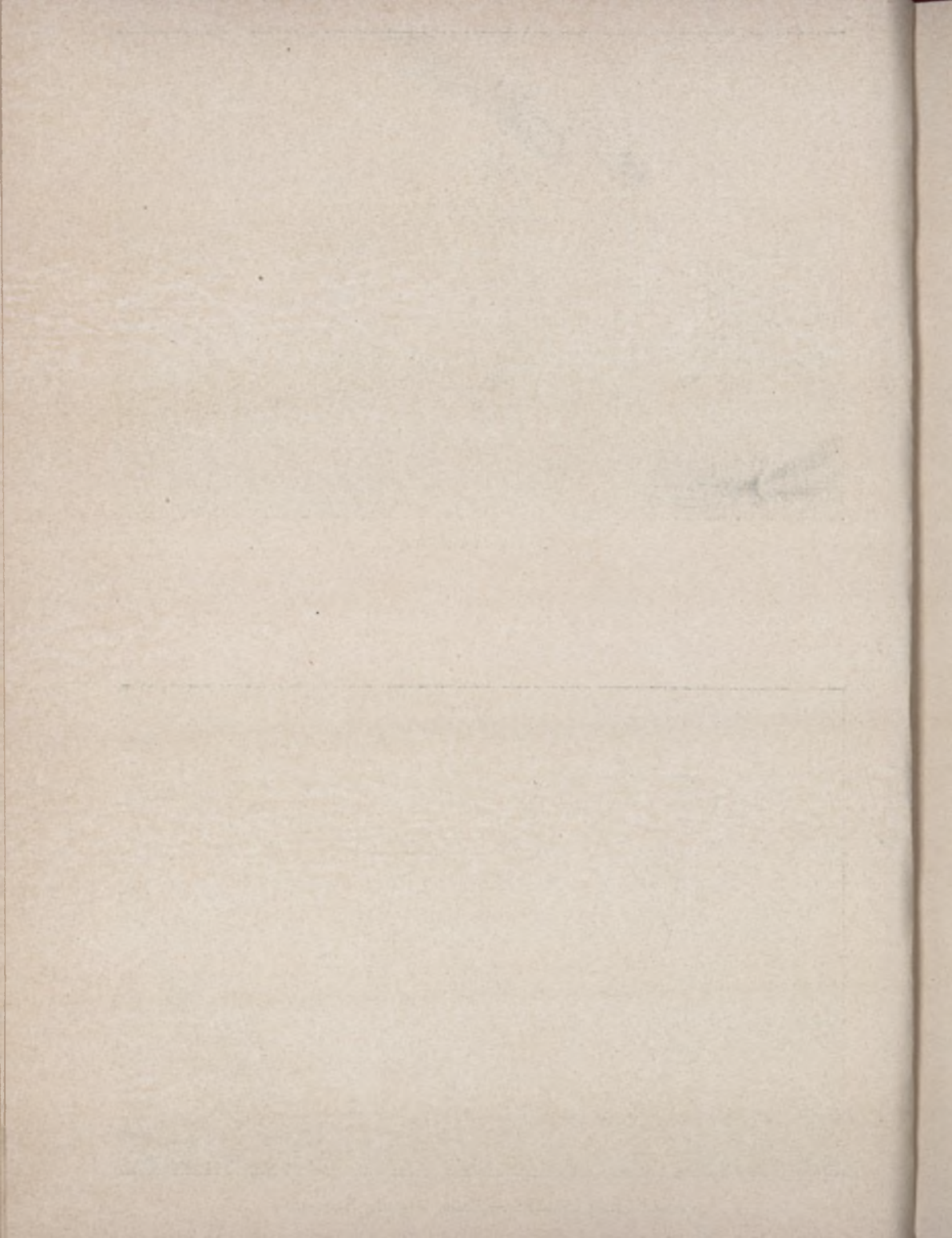
La Seine au Pont de l'Alma.

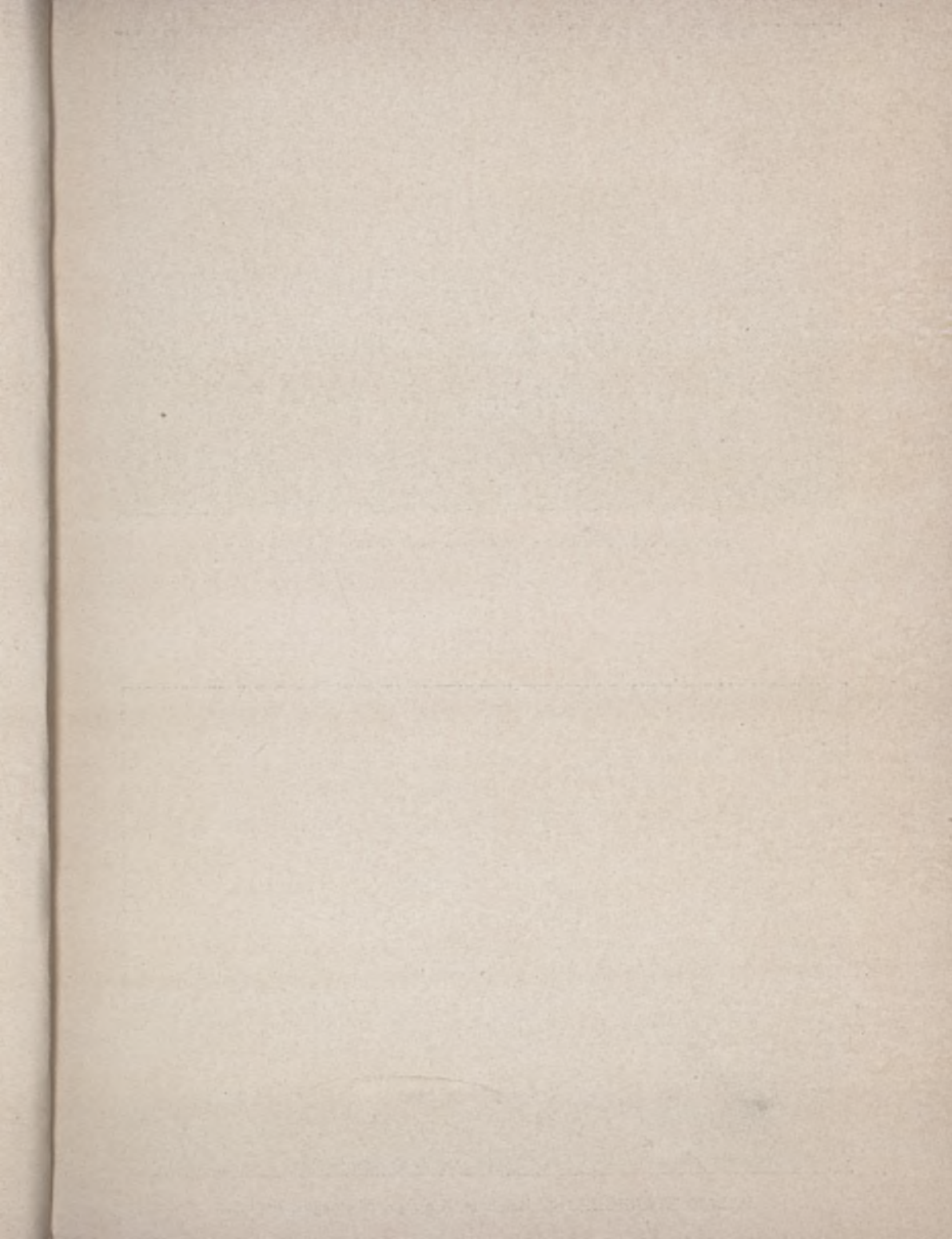


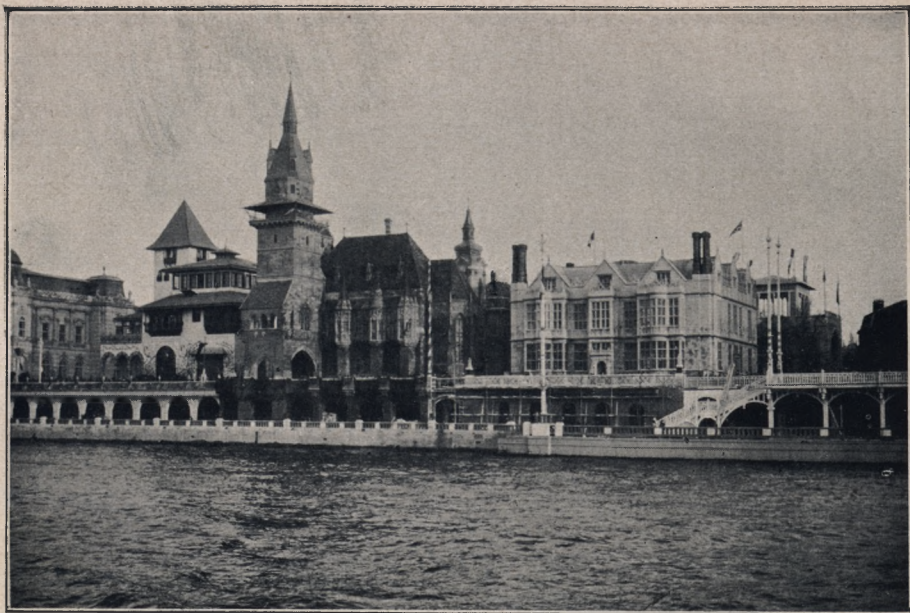
Palais de l'Italie.



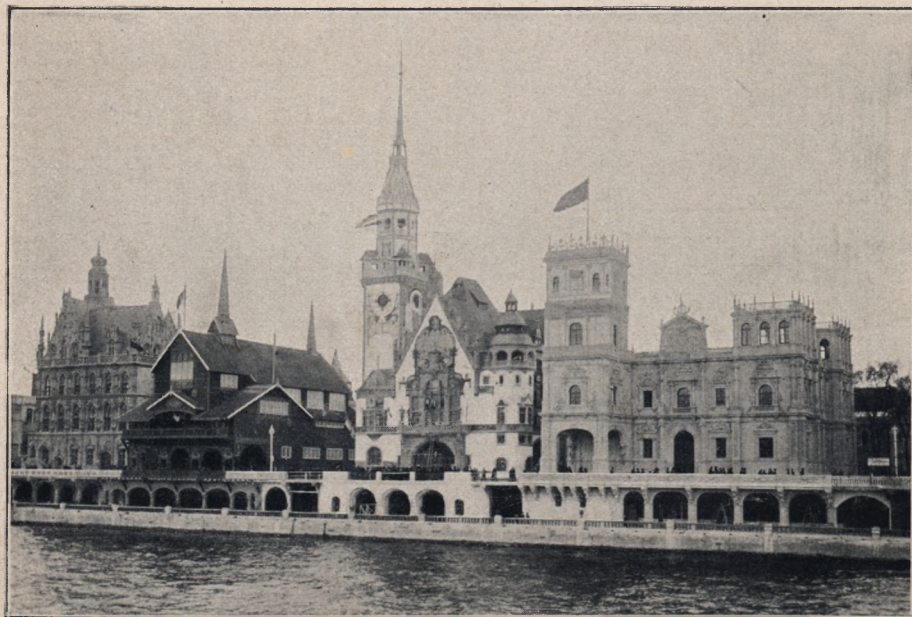
PALAIS ÉTRANGERS — Italie, Turquie, États-Unis.



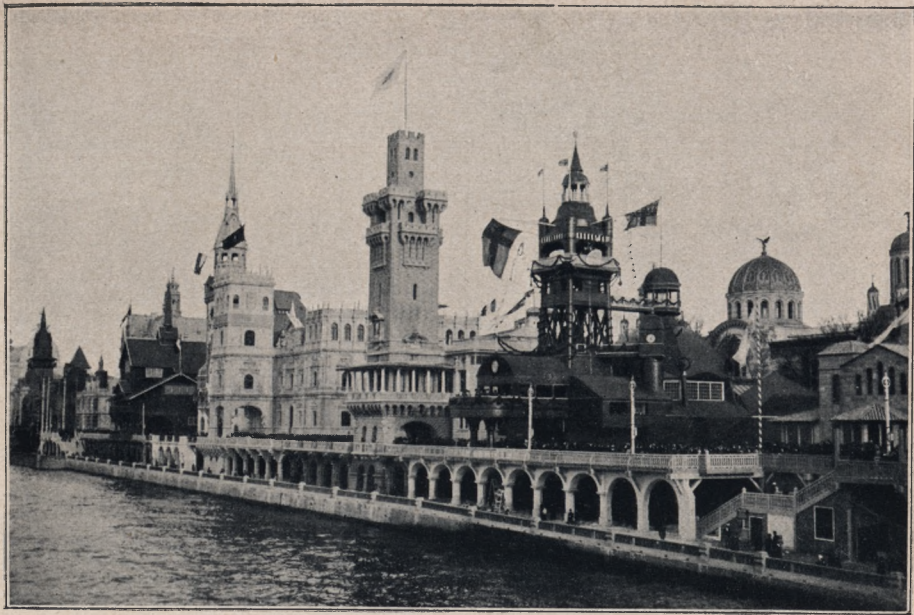




PALAIS ÉTRANGERS — Bosnie, Hongrie, Grande-Bretagne.



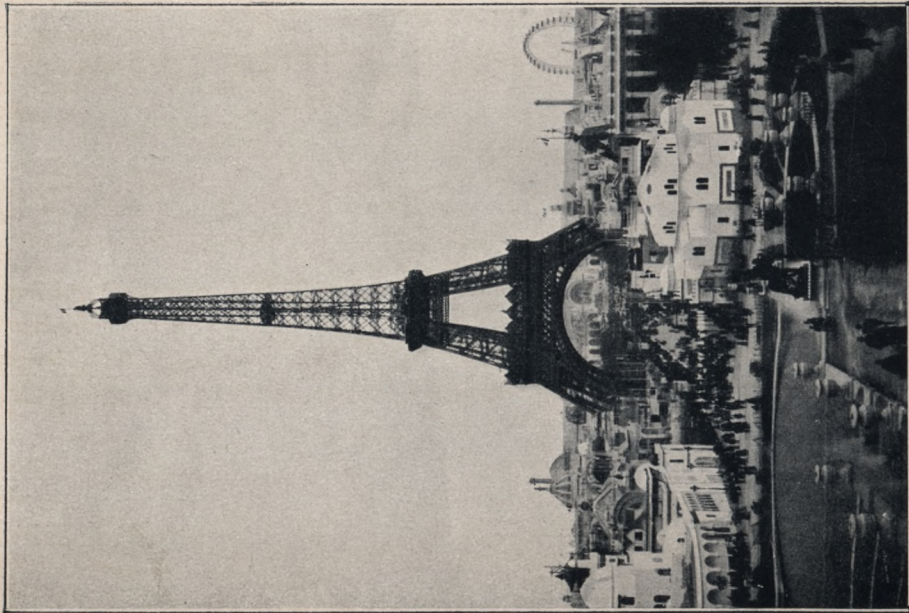
PALAIS ÉTRANGERS — Belgique, Norvège, Allemagne, Espagne.



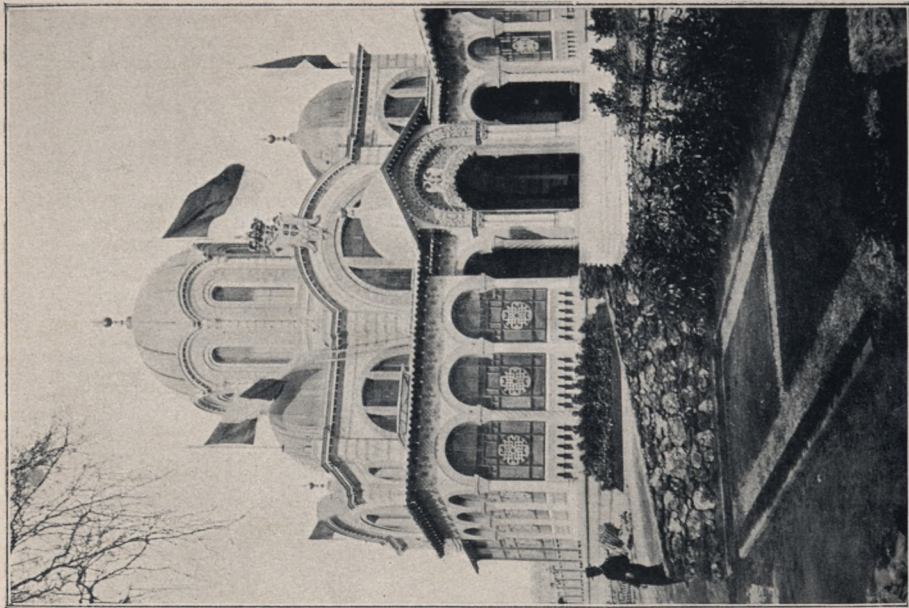
PALAIS ÉTRANGERS — Espagne, Monaco, Suède, Grèce.



PALAIS ÉTRANGERS — Pavillon de la Grèce.



La Tour de 300 mètres.



PALAIS ÉTRANGERS — Pavillon de la Serbie.

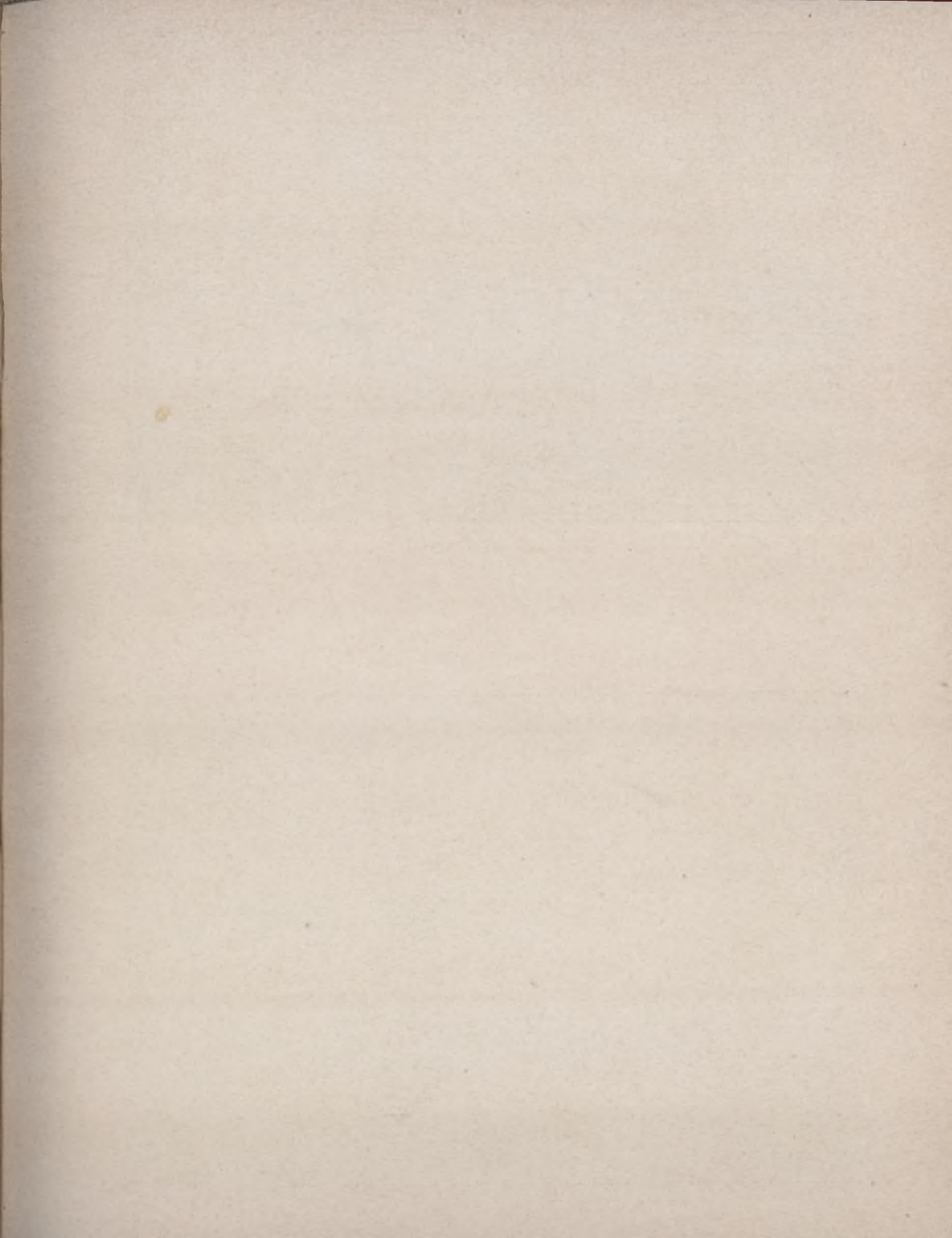


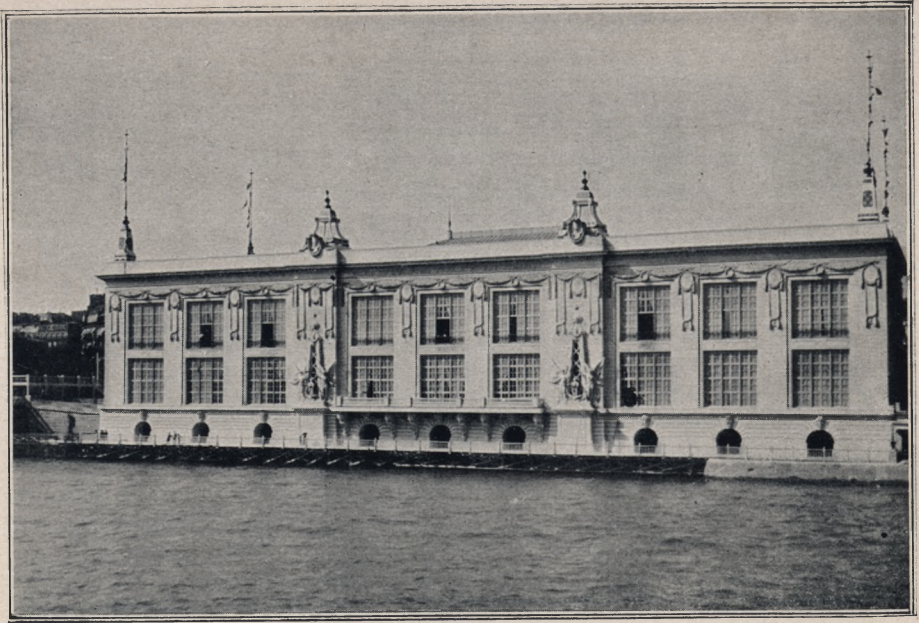
Palais de la Ville de Paris.



Palais de l'Horticulture.







Palais des Congrès.



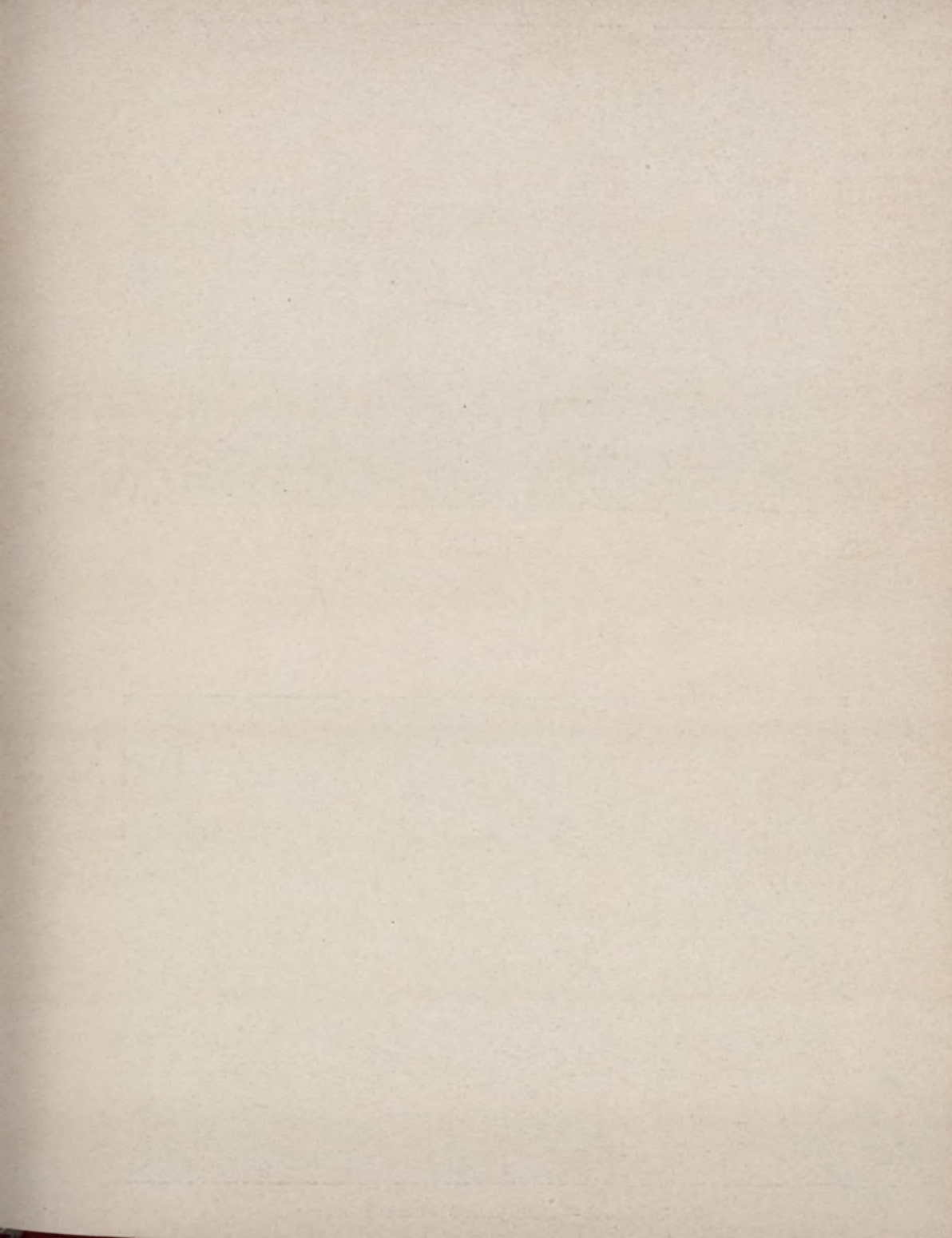
Palais des Armées de Terre et de Mer.



Palais de la Navigation.



Palais des Armées de Terre et de Mer — Le Terre-Neuven.





Le Pont d'Iéna.



NAVIGATION — Messageries Maritimes et Allemagne.

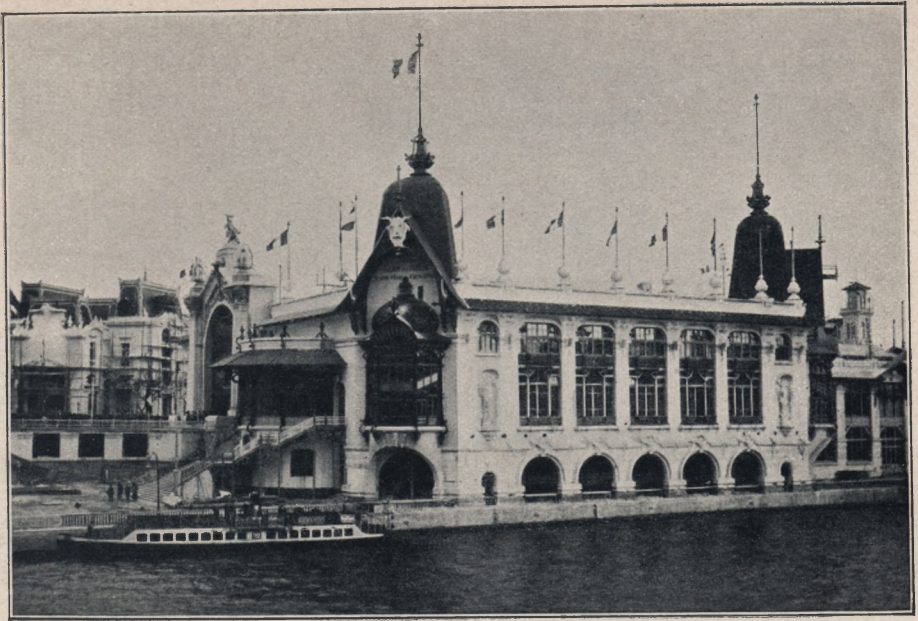
UJK
Biblioteka
Główna
w Kielcu



Palais de l'Électricité et Château d'Eau.



CHAMP DE MARS — Le Château d'Eau.



Palais des Forêts — Chasse et Pêche.



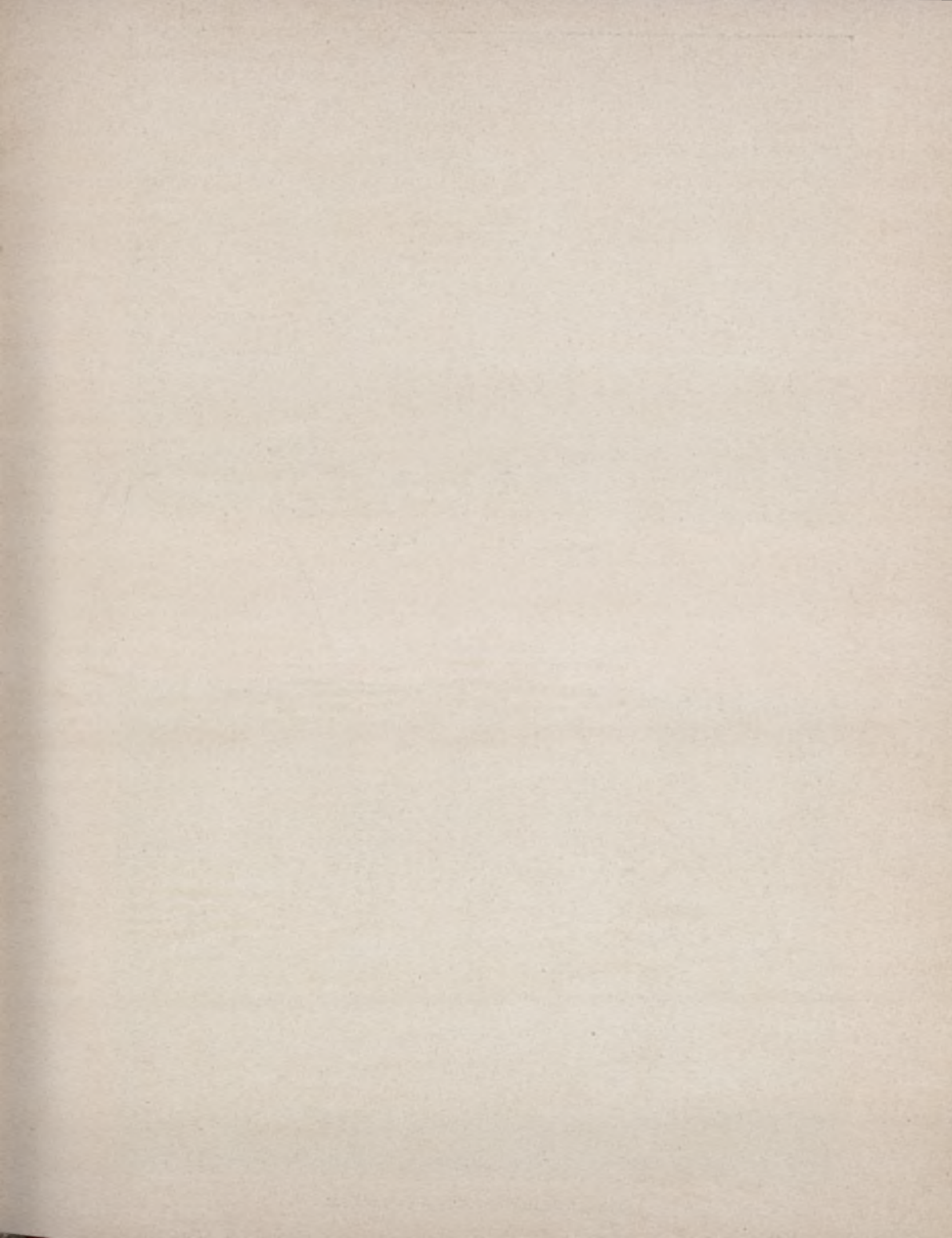
TROCADÉRO — Vue d'ensemble.



TROCADÉRO — Palais Officiel de l'Algérie.



TROCADÉRO — Section Russe.





TROCADÉRO — L'Indo - Chine.



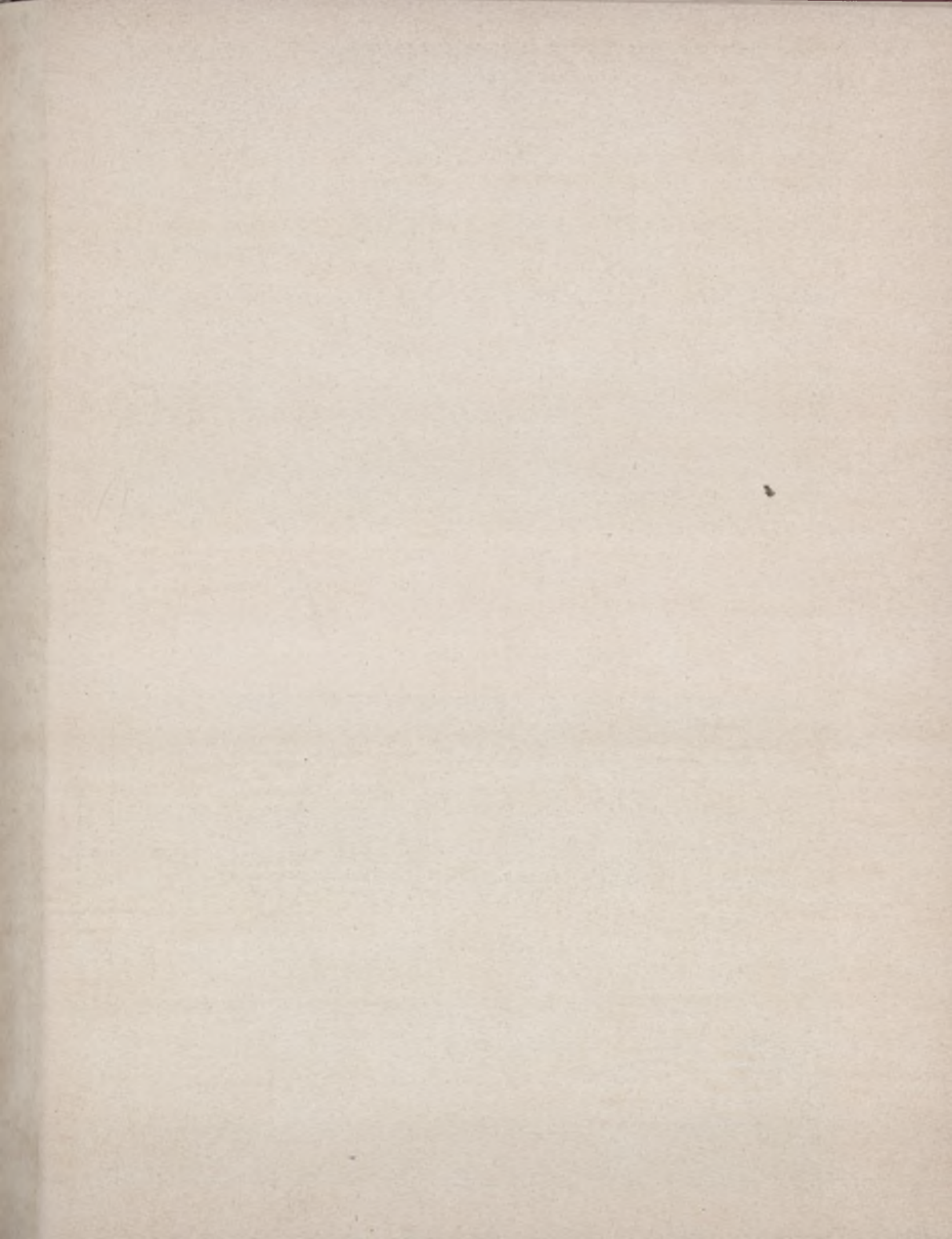
TROCADÉRO — Indes Néerlandaises.



La Porte des Invalides — Décoration et Mobilier.

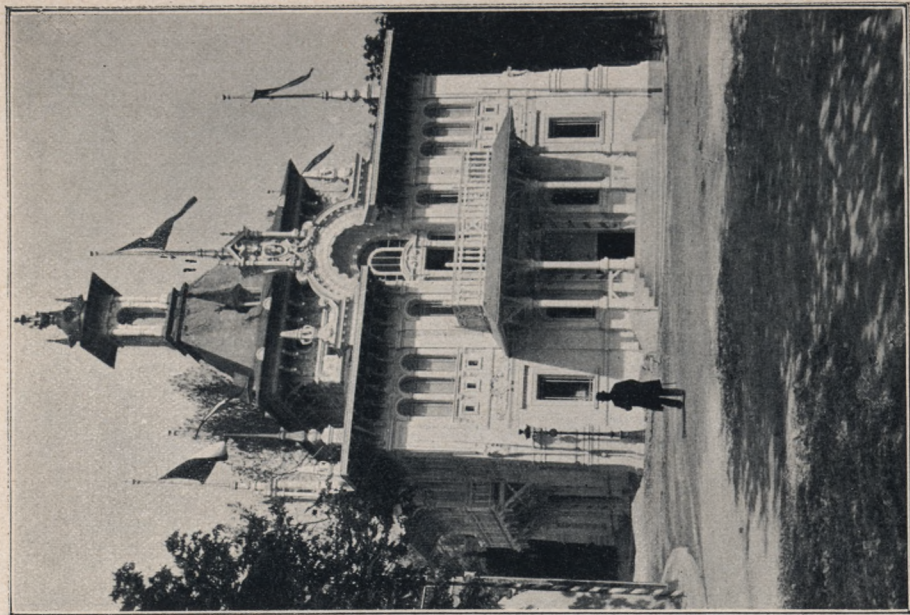


INVALIDES — Palais des Manufactures Nationales.





TROCADÉRO — Miliciens du Dahomey.



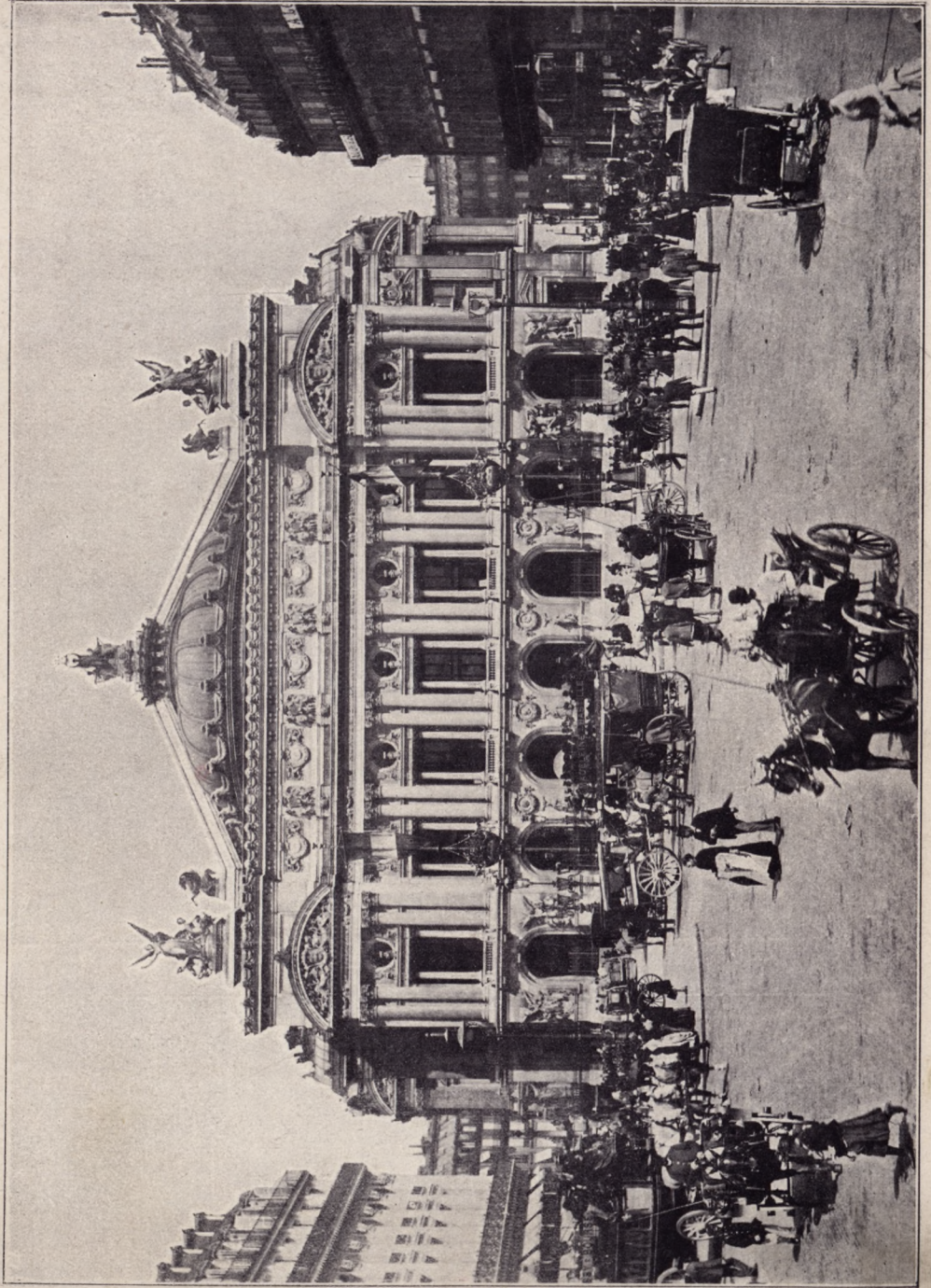
TROCADÉRO — Le Transvaal.



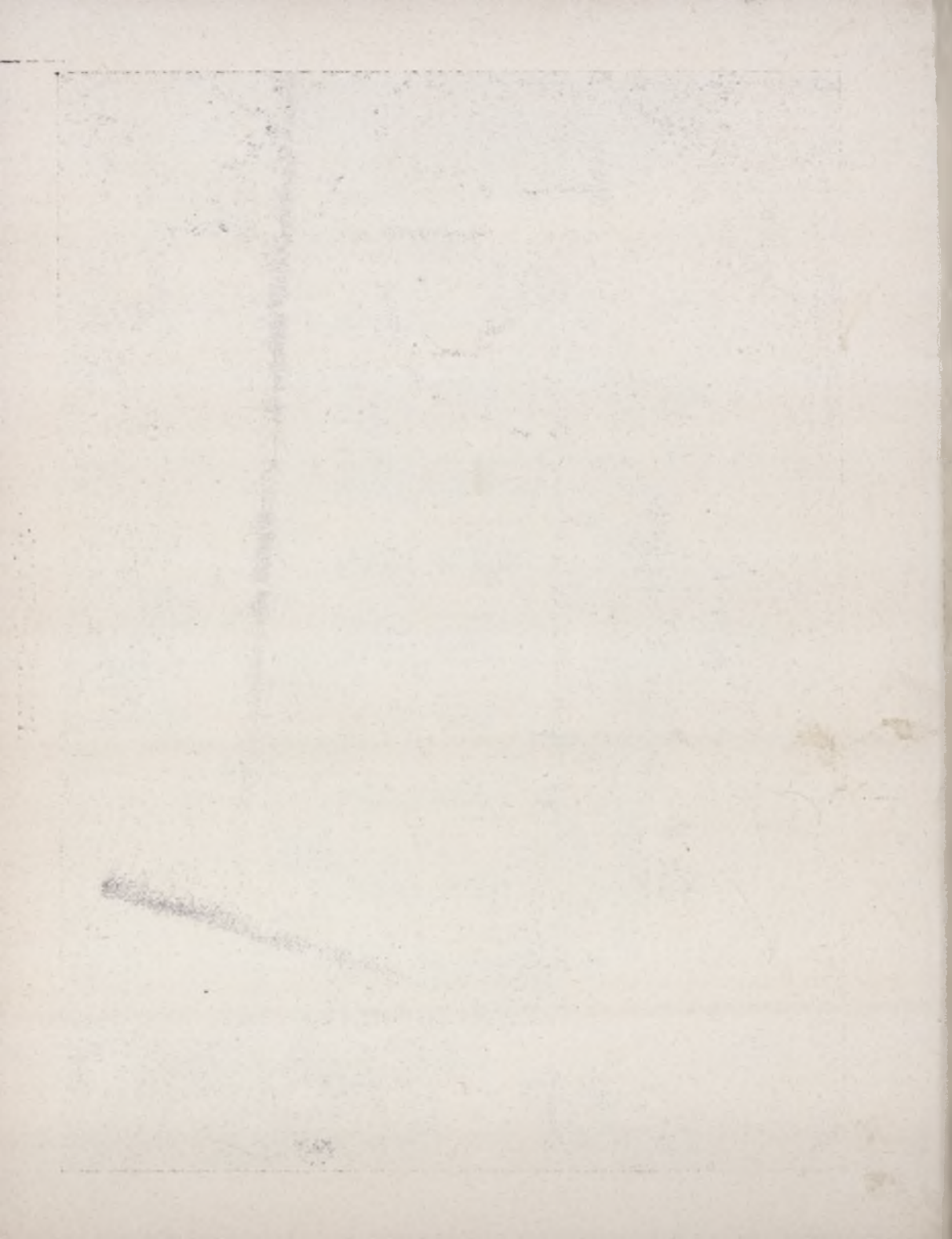
La Plate-forme mobile.



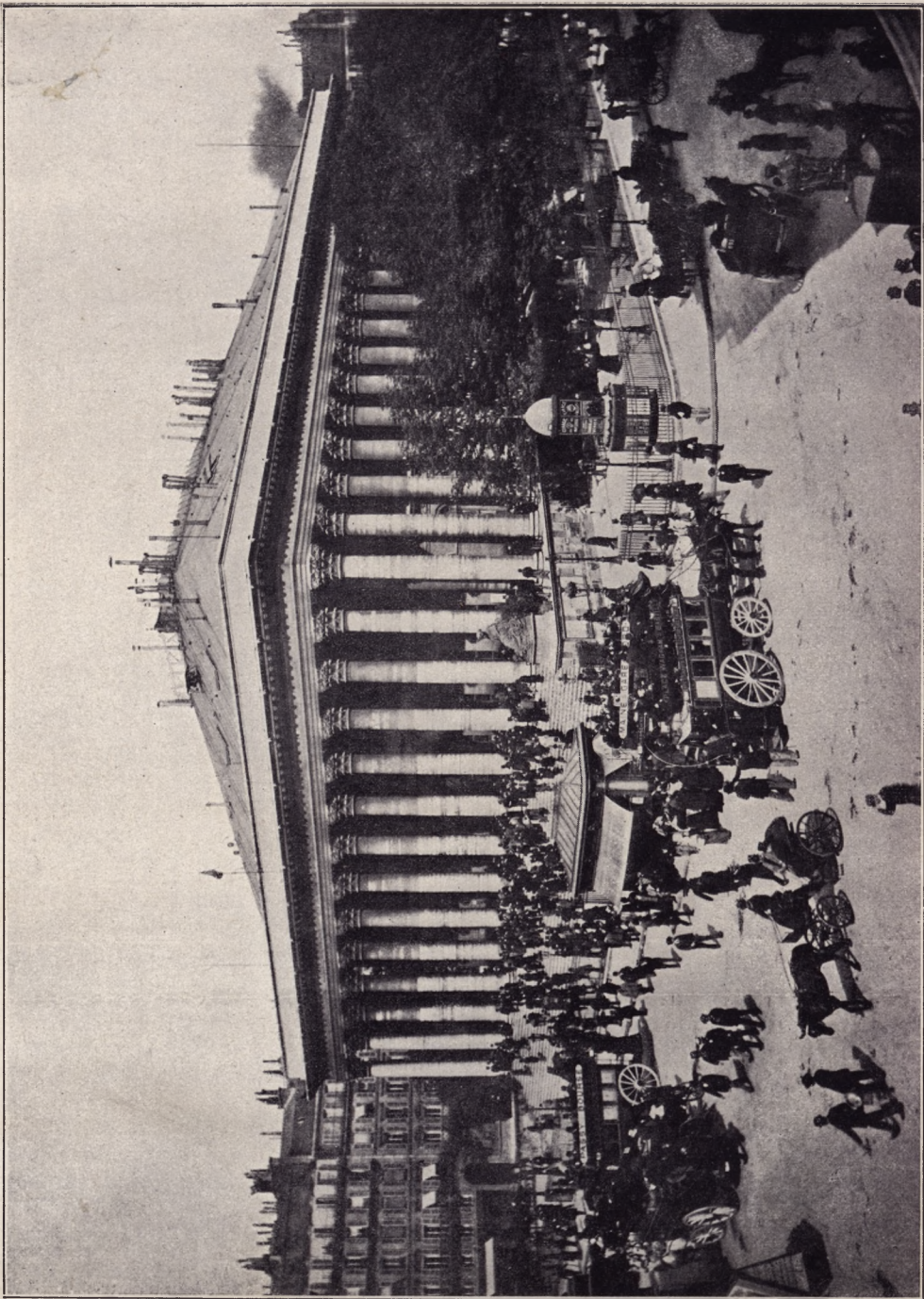
Le Village suisse — Mazots.



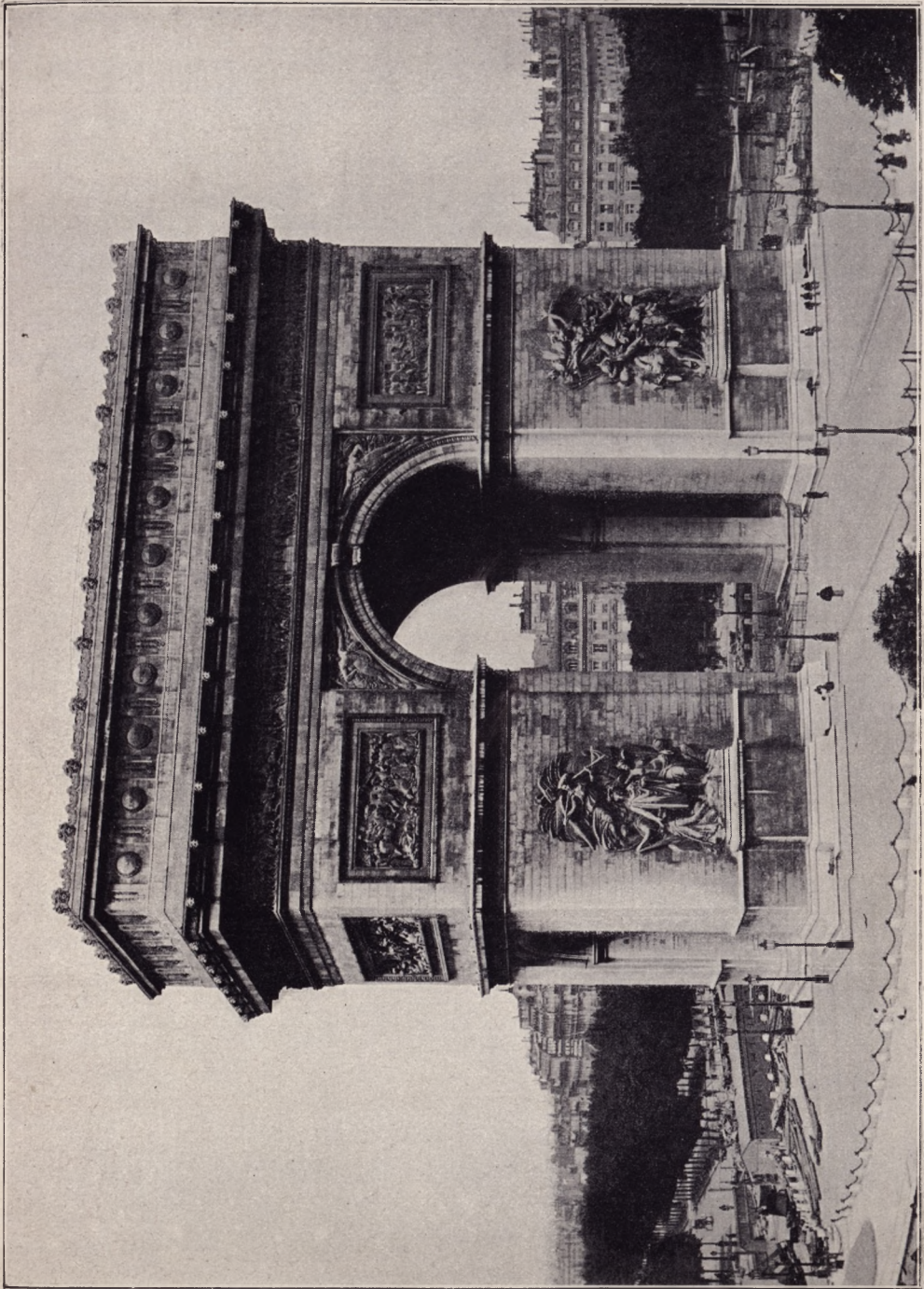
PARIS. — L'Opéra.



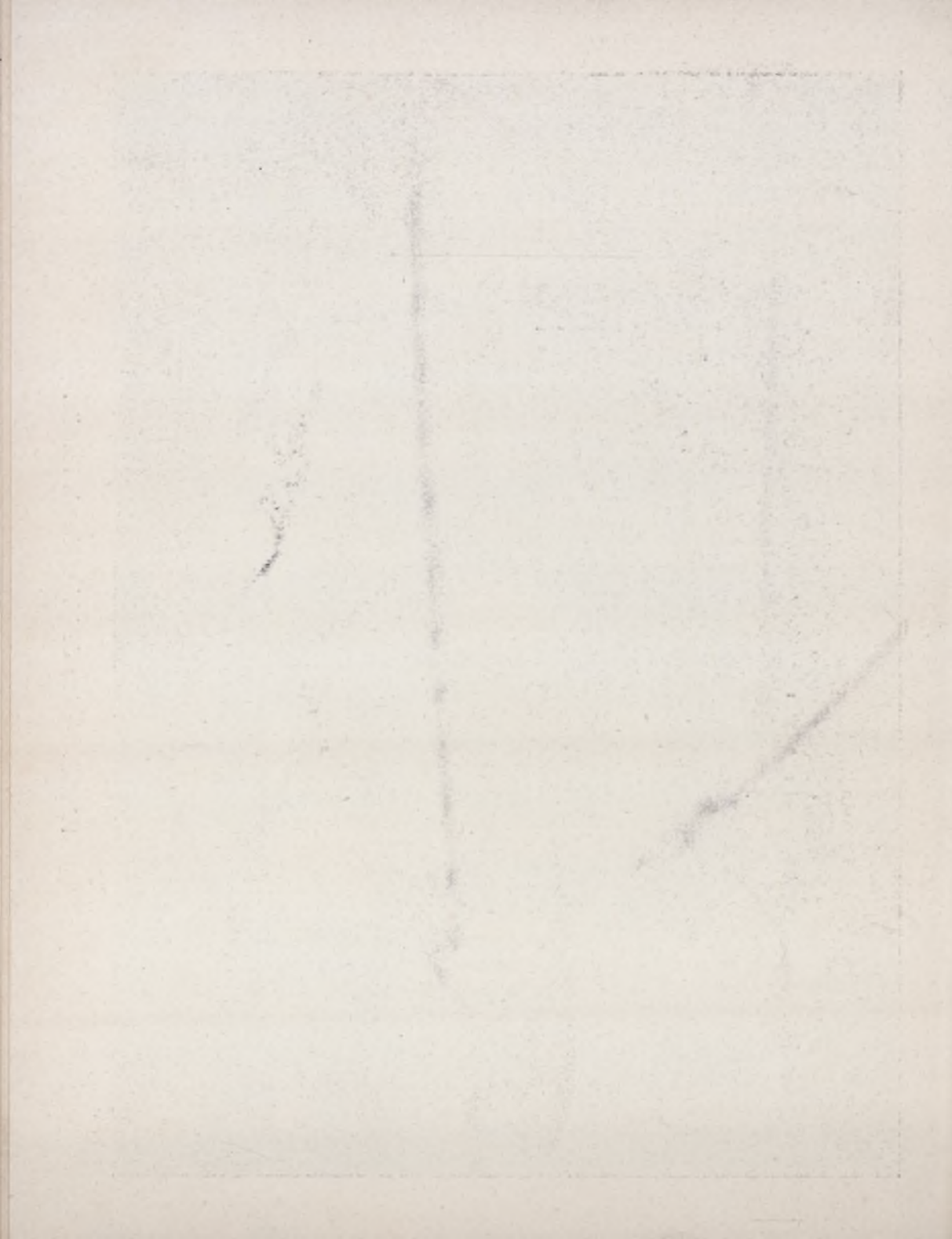


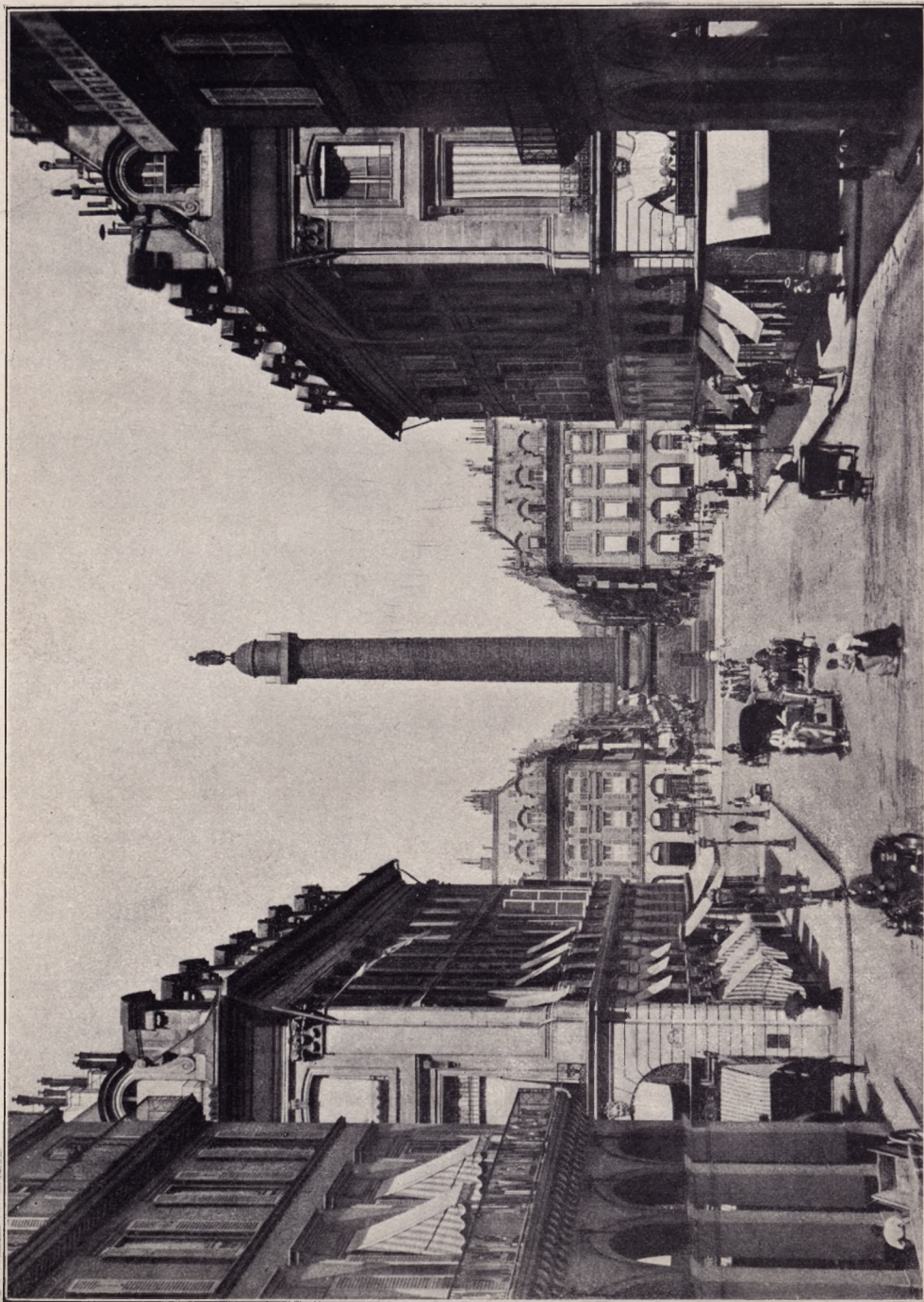


PARIS. — La Bourse.

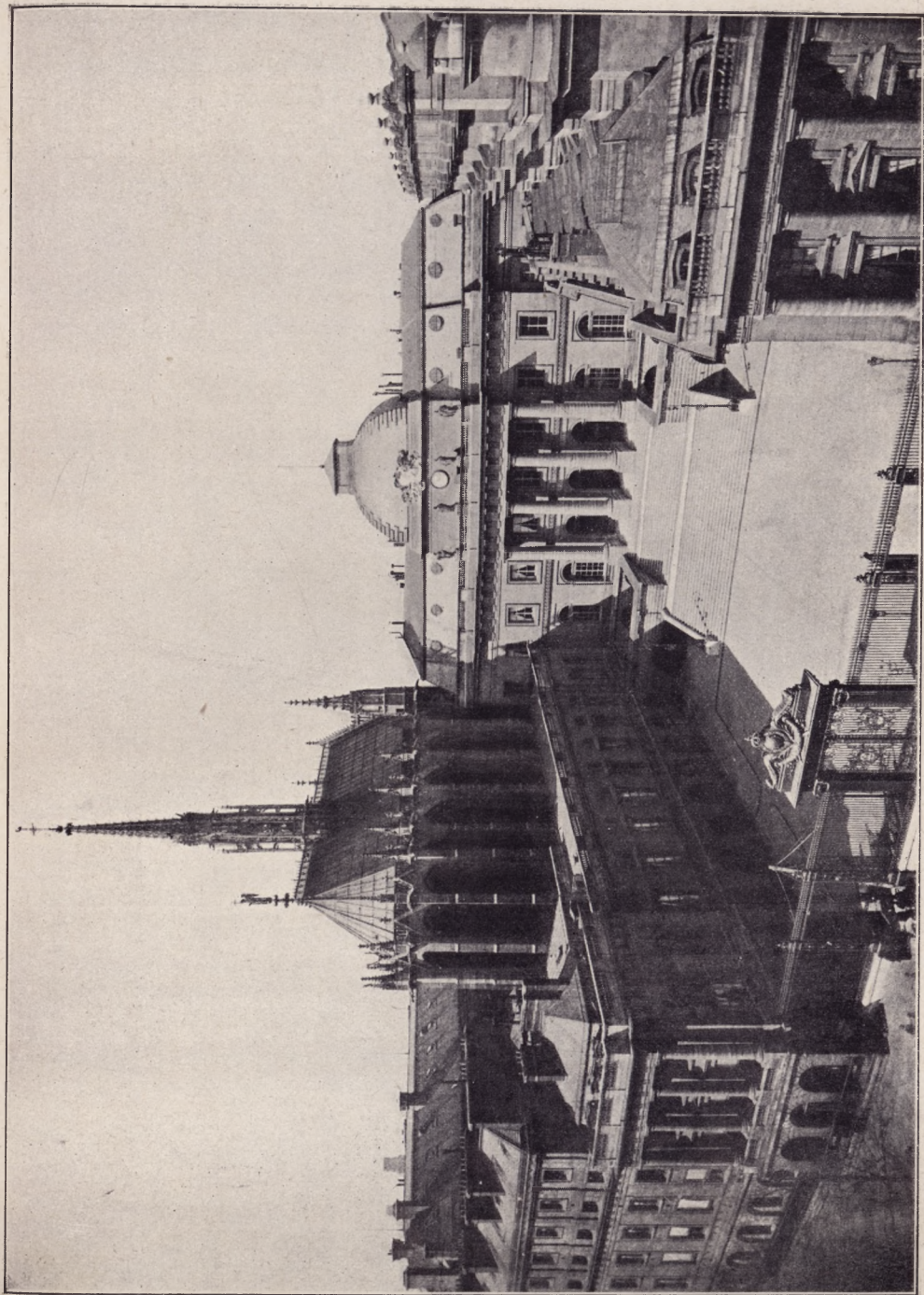


PARIS. — Arc de Triomphe de l'Étoile.

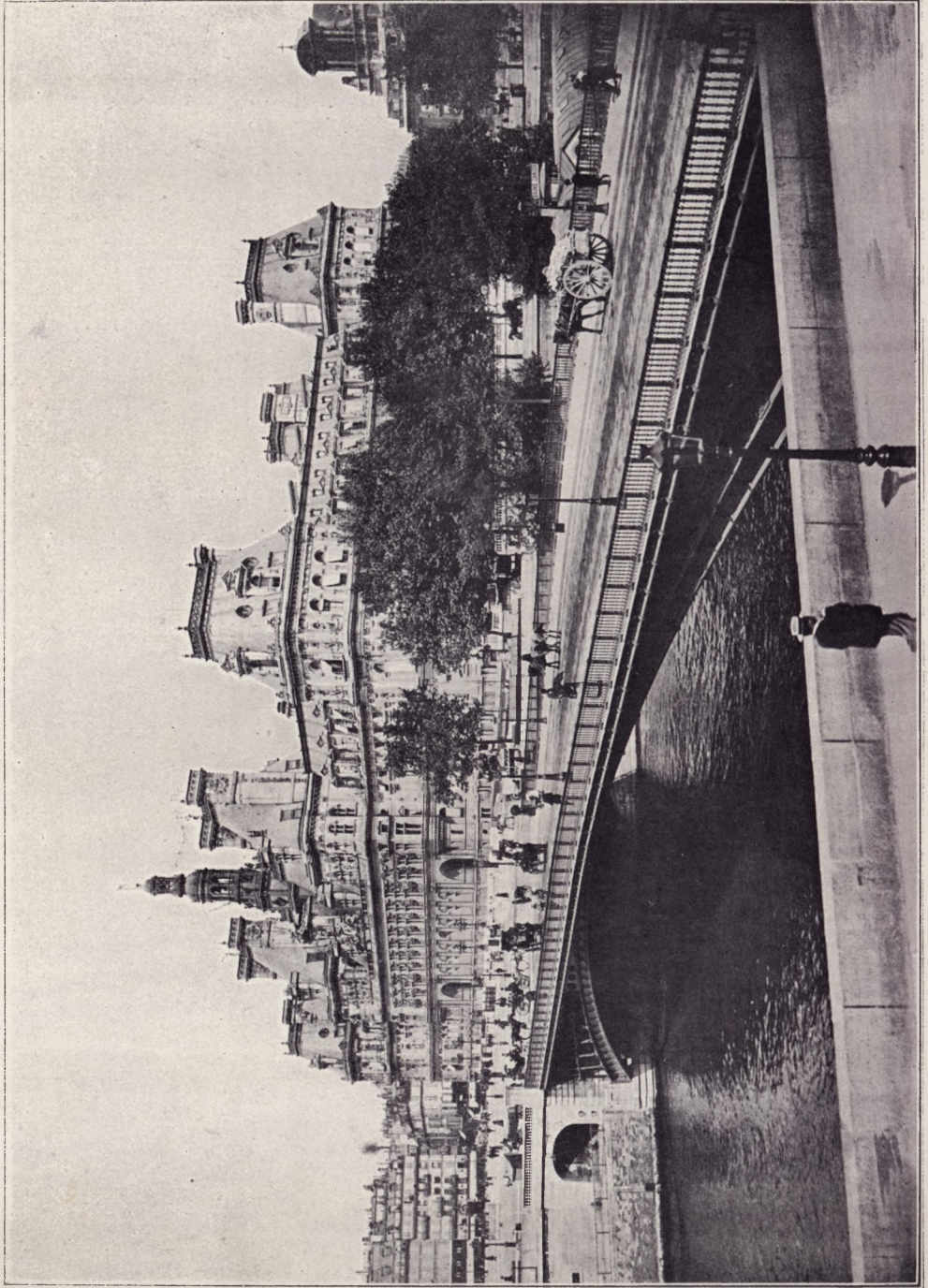




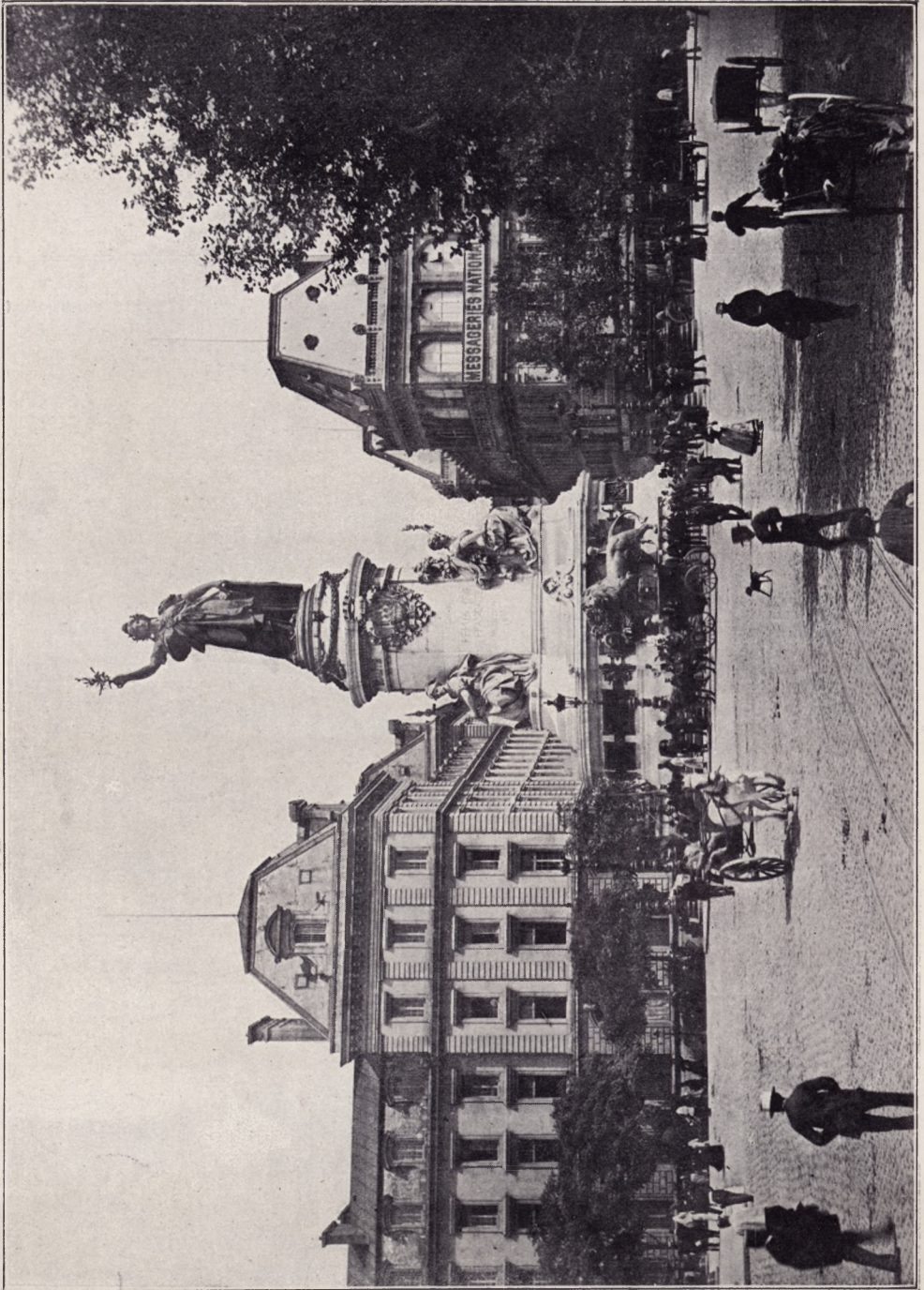
PARIS. — Colonne Vendôme. — Rue de Castiglione.



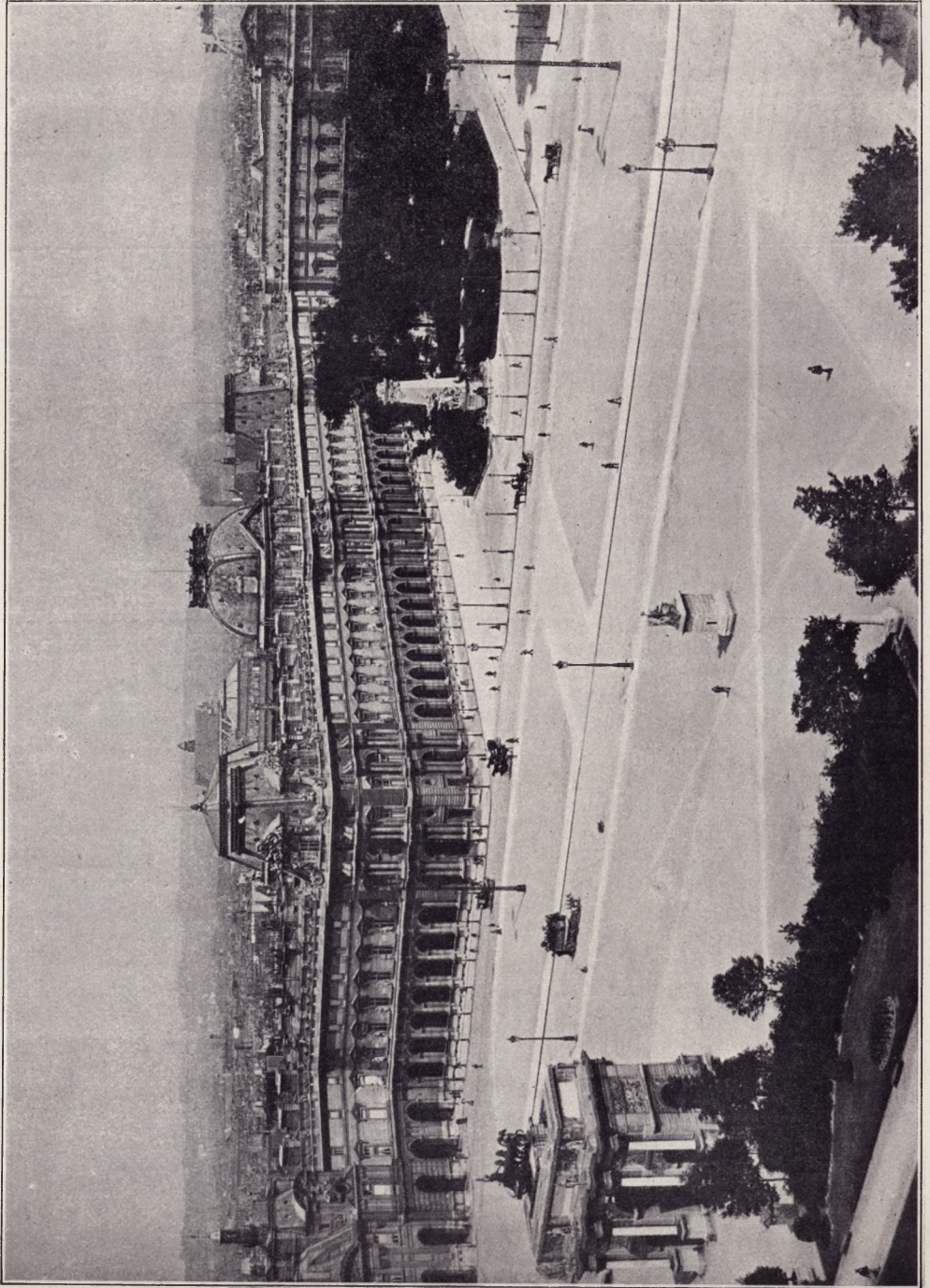
PARIS. — Le Palais de Justice et la Sainte Chapelle.



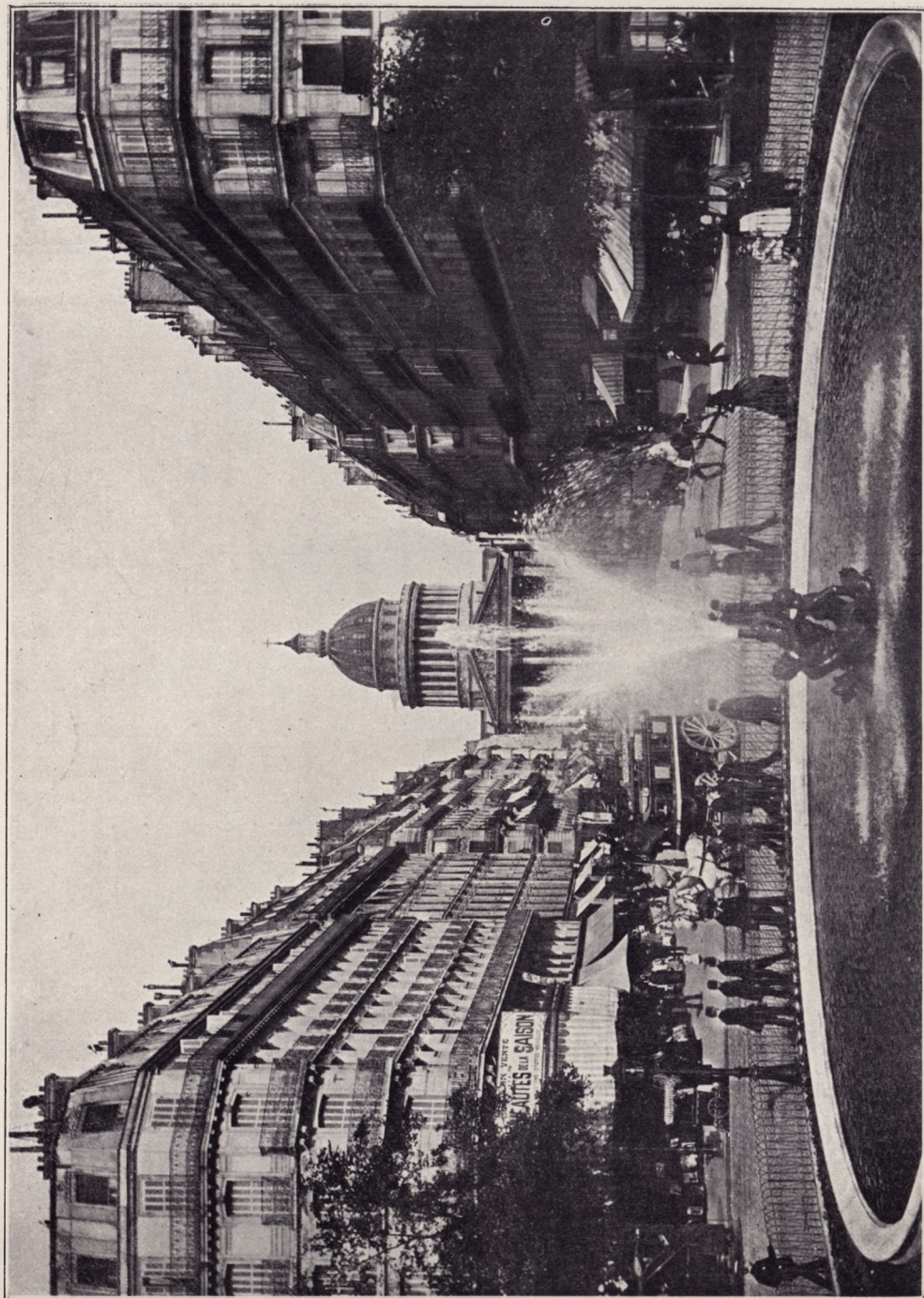
PARIS. — L'Hôtel-de-Ville. — Vue générale.



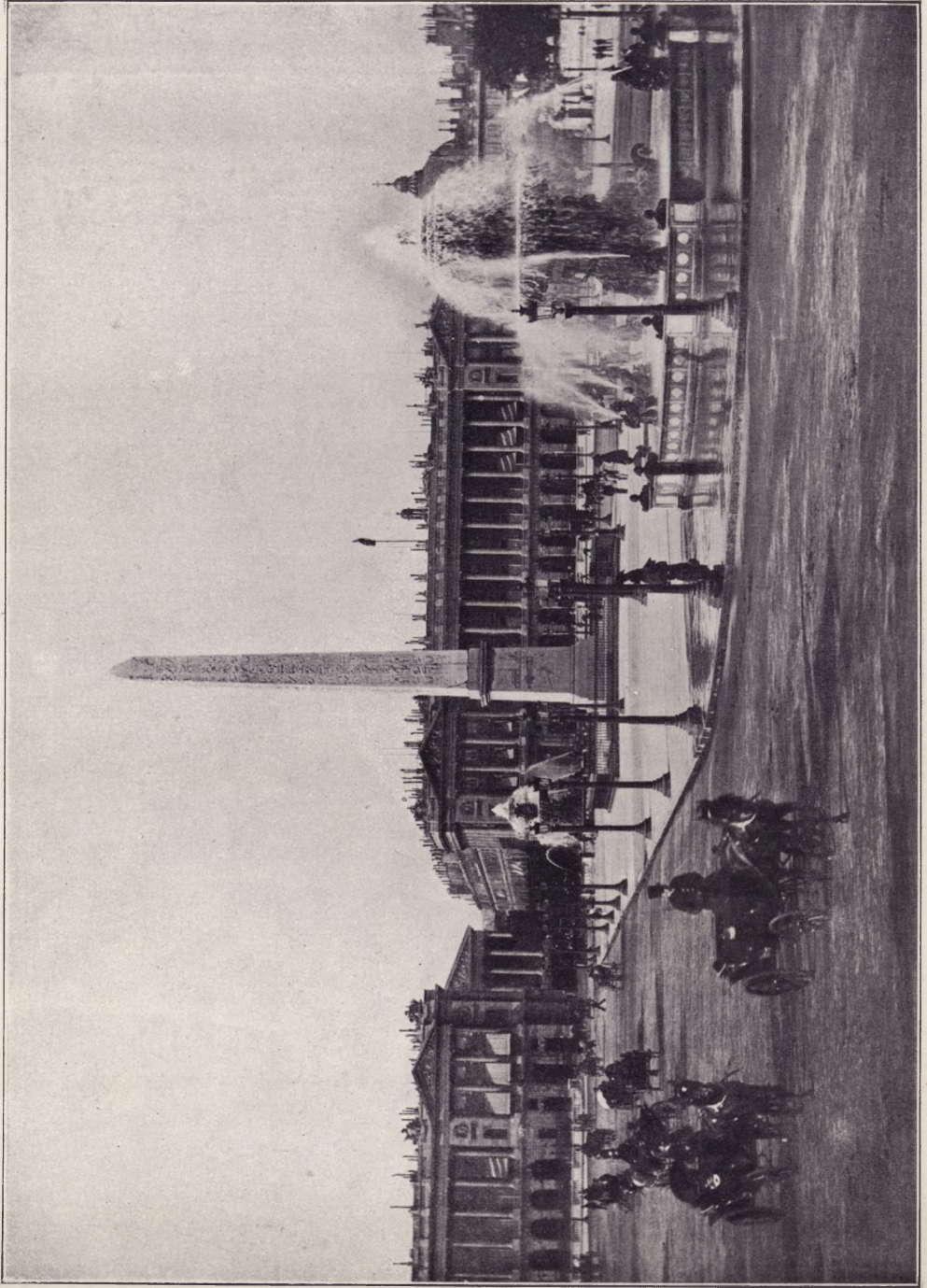
PARIS. — Place de la République.



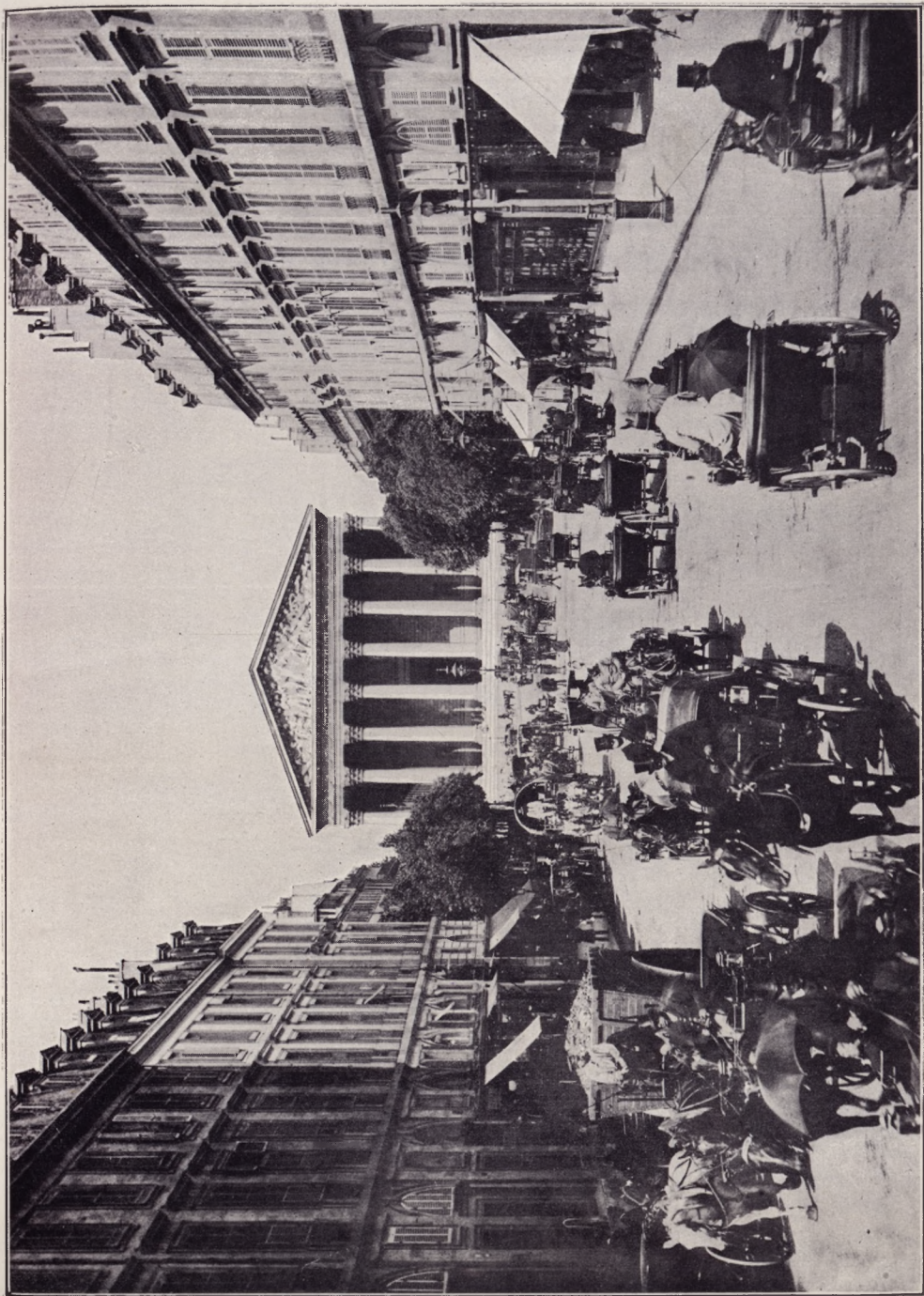
PARIS. — Le Louvre. — Place du Carrousel.



PARIS. — Rue Soufflot et Panthéon.



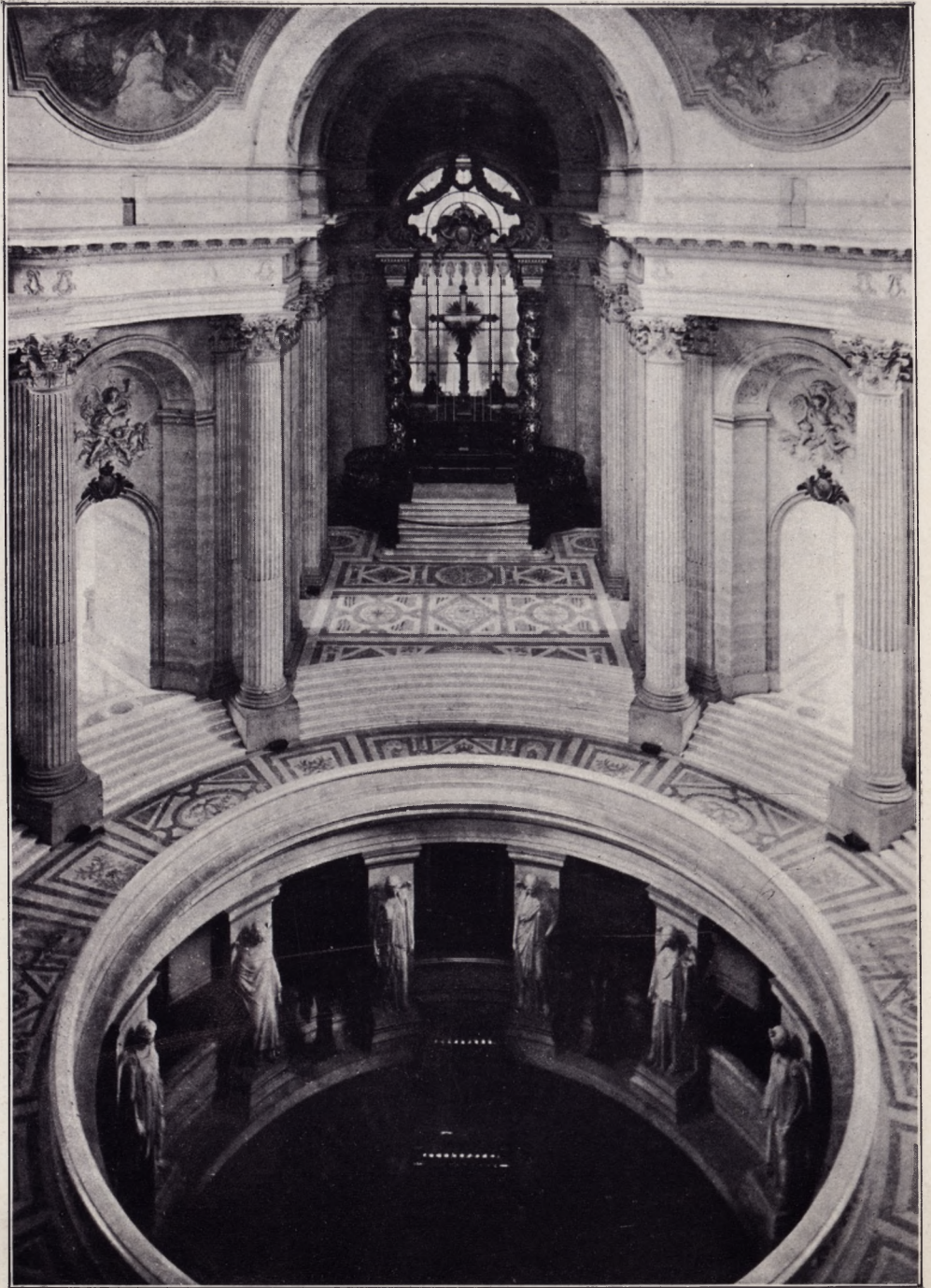
PARIS. — Place de la Concorde.



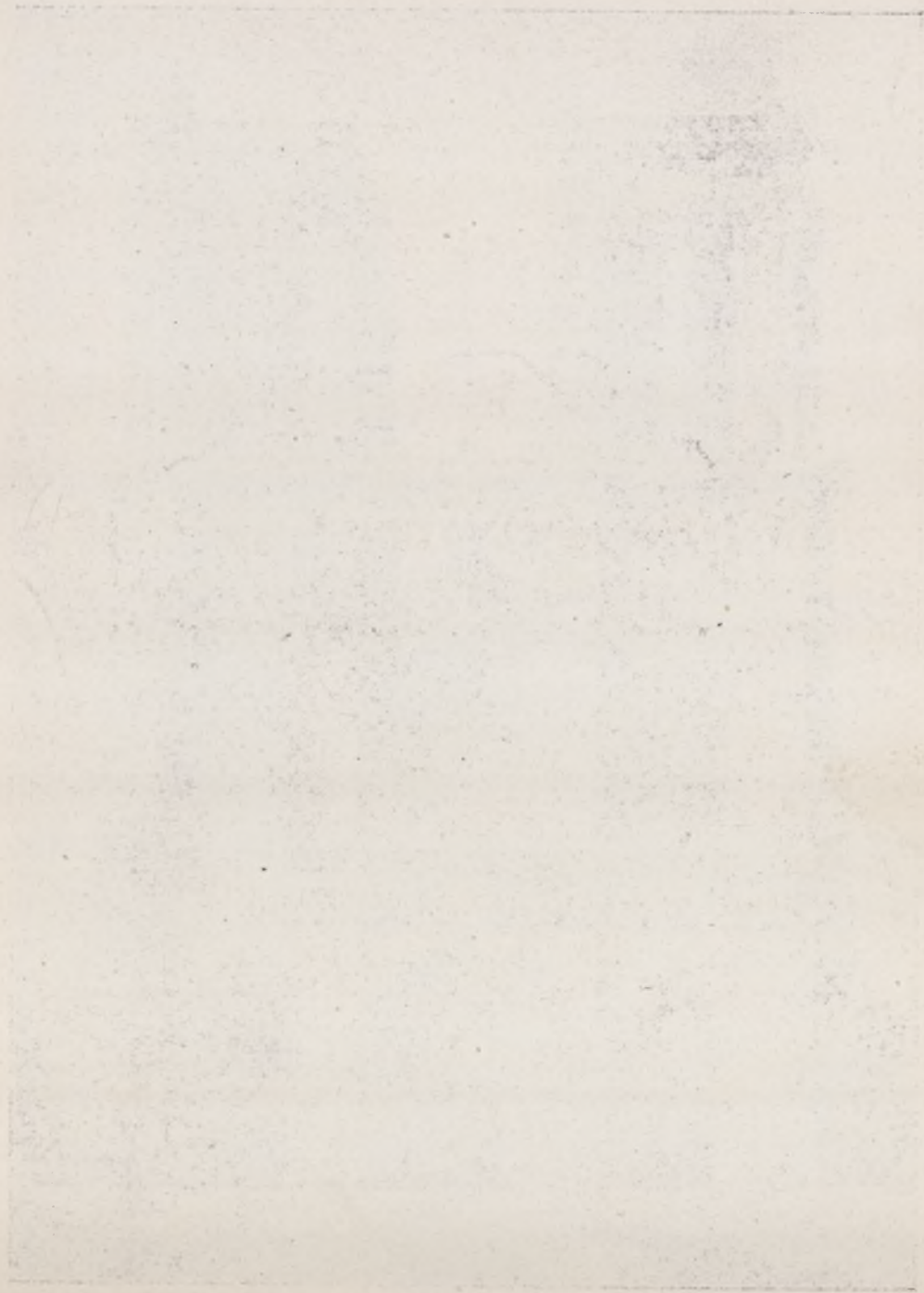
PARIS. — La Madeleine et la rue Royale.

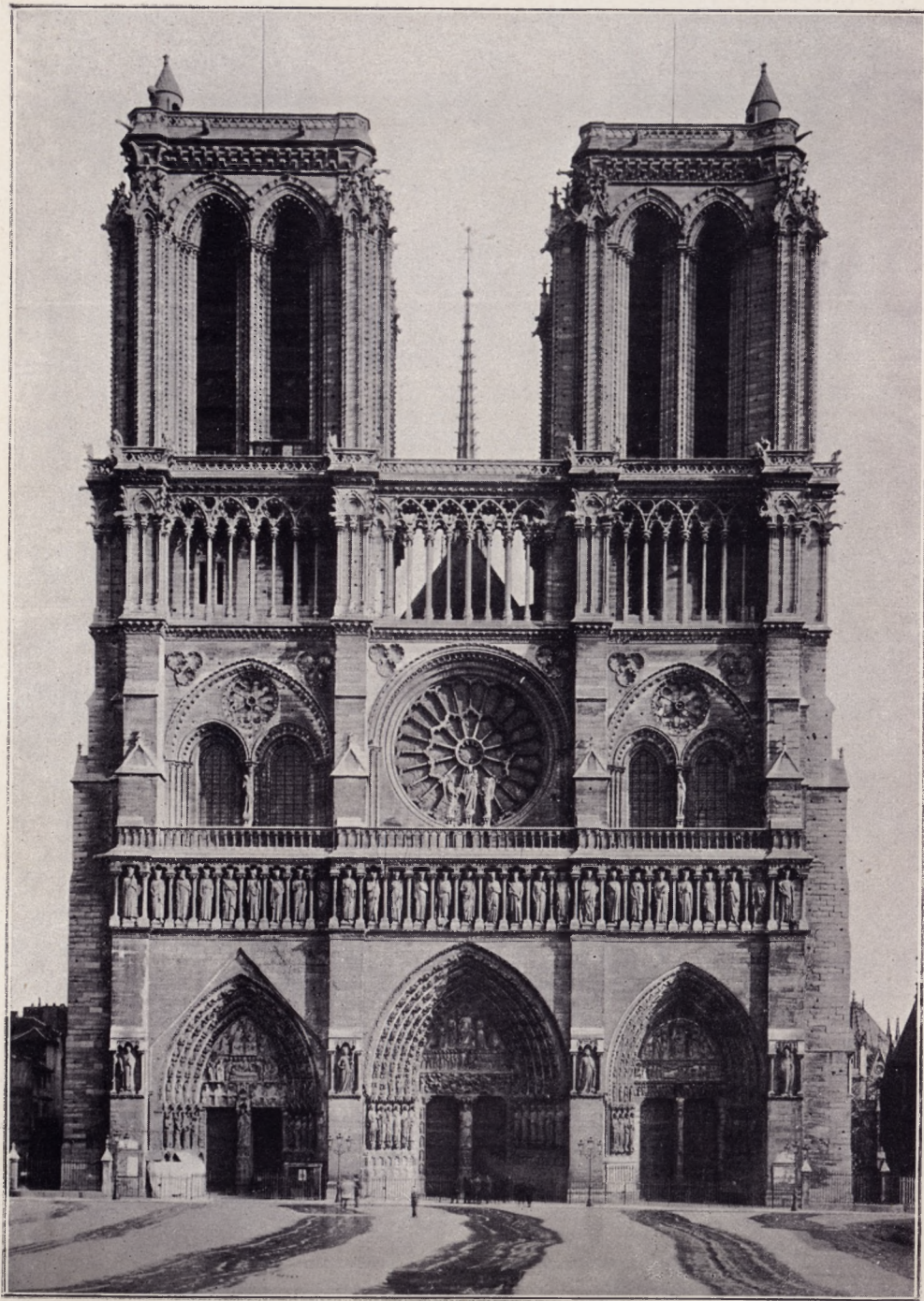


PARIS. — Colonne de Juillet. — Place de la Bastille.



PARIS. — Les Invalides. — Tombeau de Napoléon.





PARIS. — Notre-Dame.



PARIS. — Tour de 300 mètres.



VERSAILLES. — Vue générale du Palais.



VERSAILLES. — Grandes eaux.

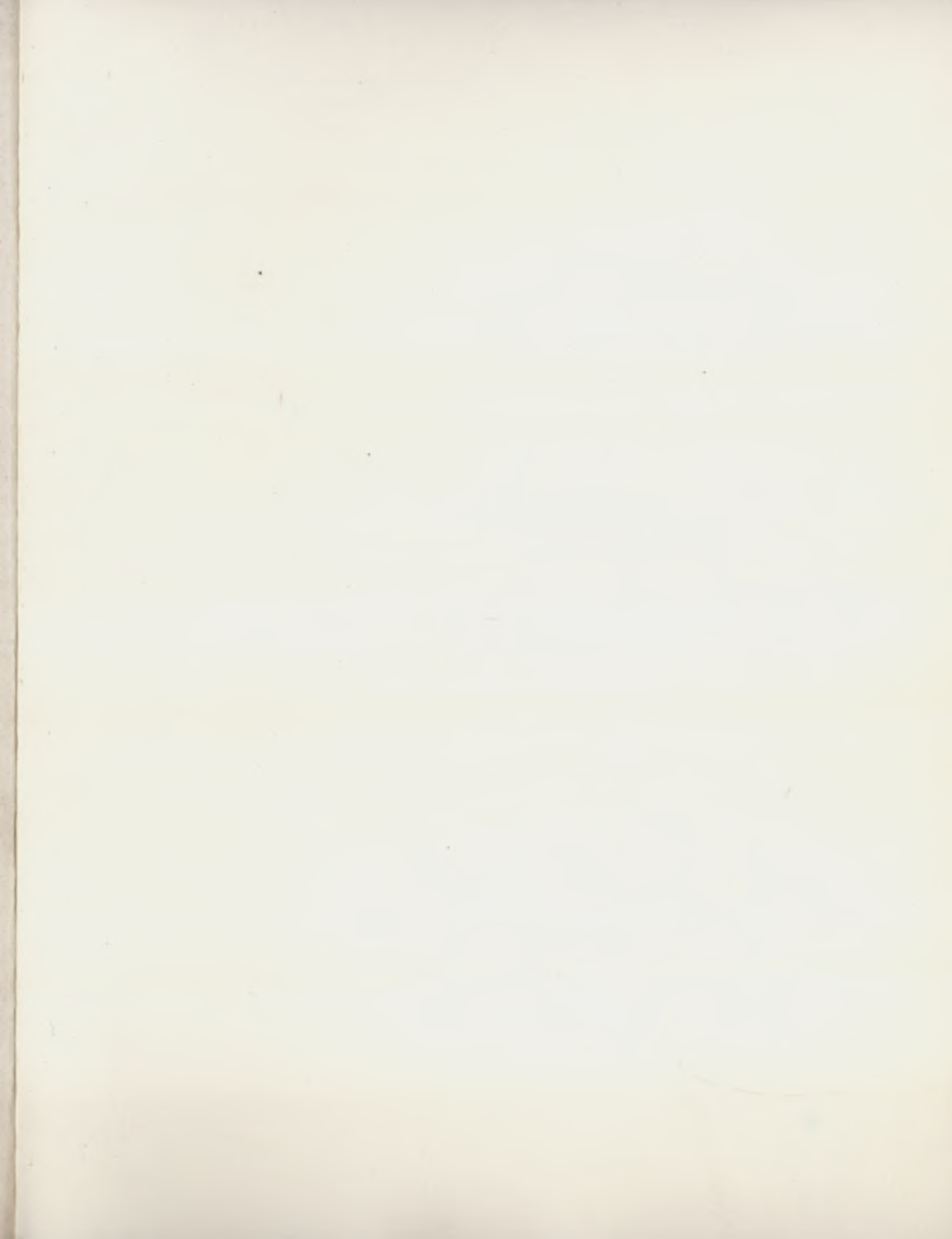
PAUL DUFONT, Paris,

TARIDE, 18-20, Boul. St-Denis, Paris.

ANDREWANO

POCZTA
NIK
MA.

Biblioteka
Główna
w Kielcach



Biblioteka UJK Kielce

UJK



0451971